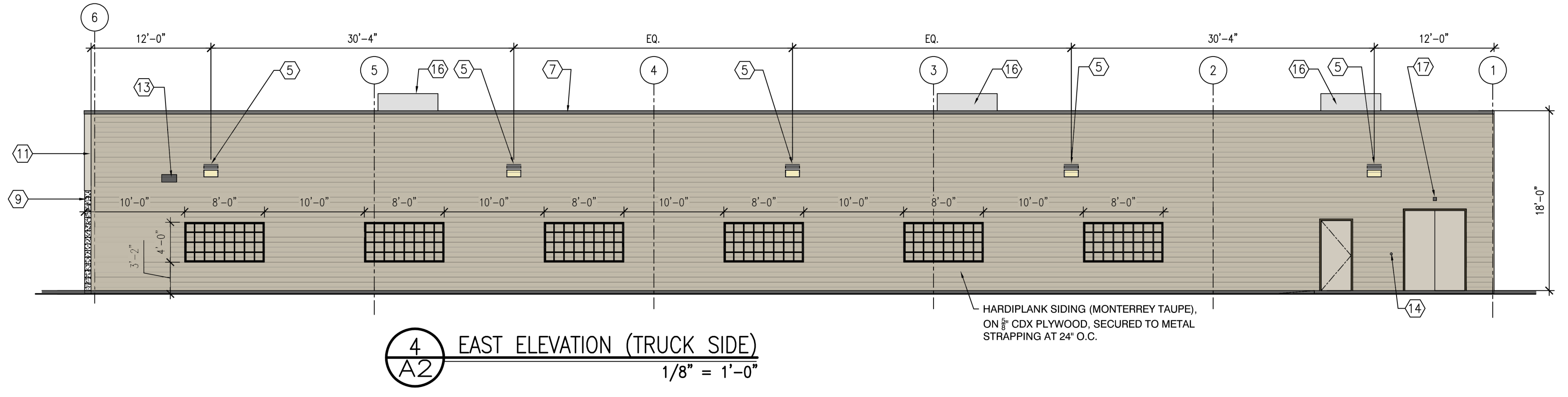
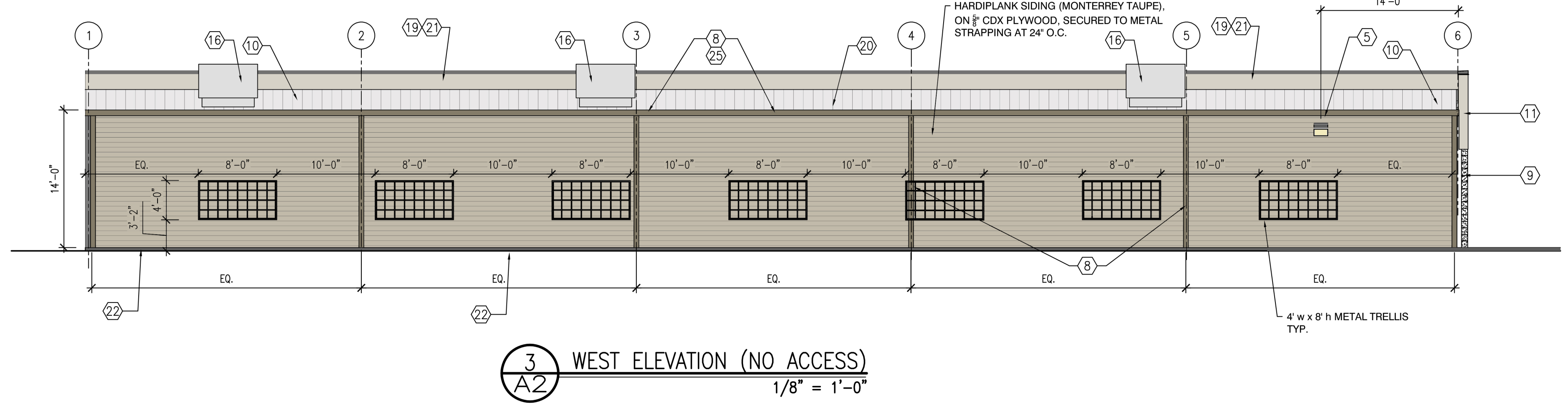
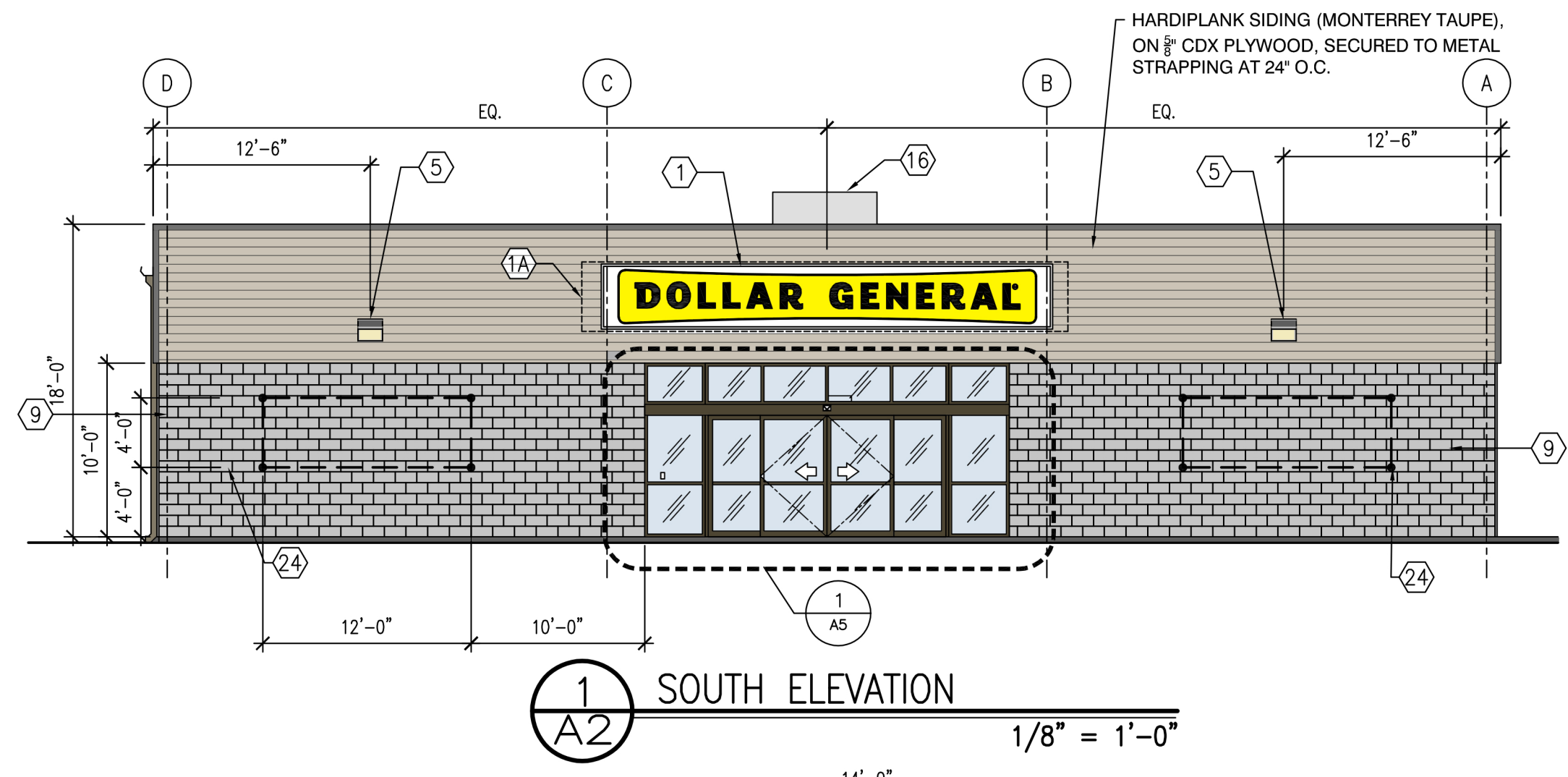
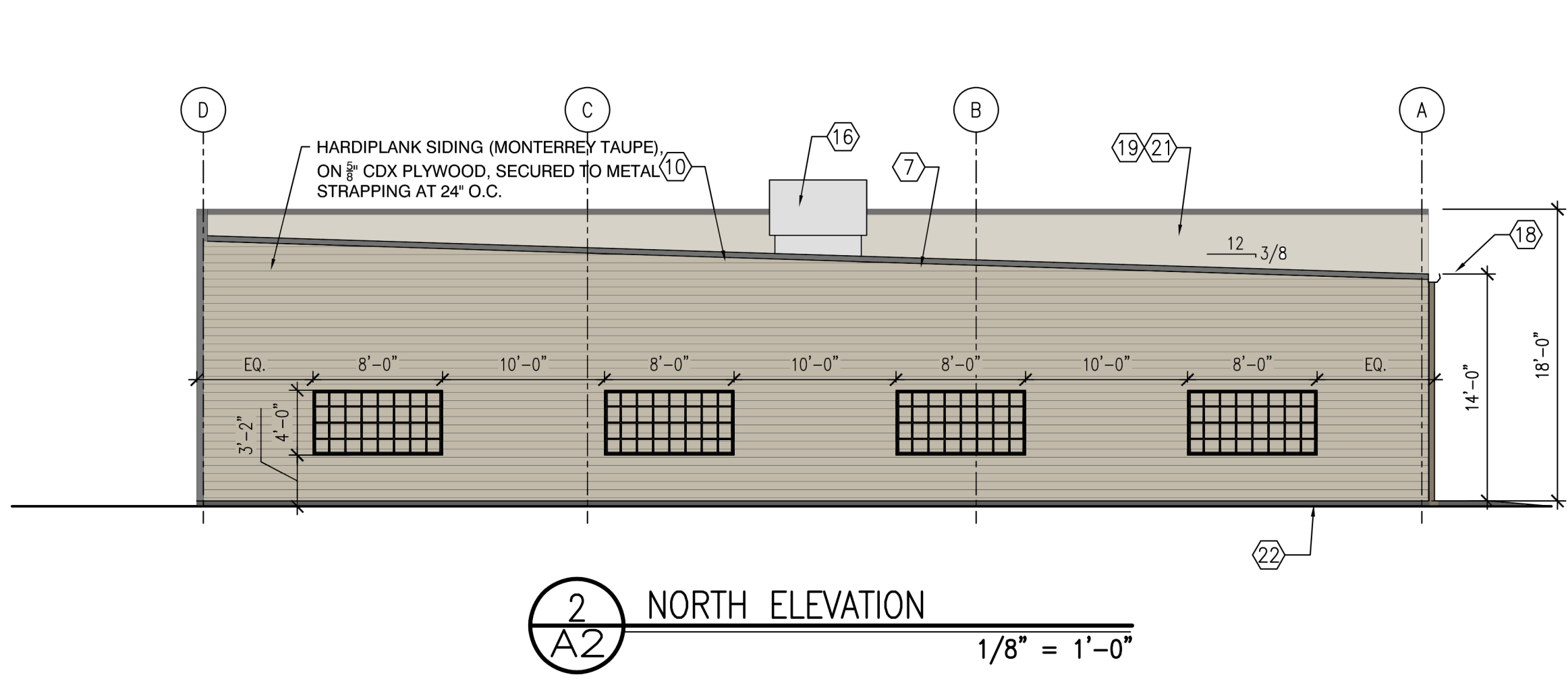


FINISHES	RIGID GLOBAL BUILDINGS										PREFERRED COLORS IF ALTERNATE EXTERIOR MATERIALS ARE USED INSTEAD OF METAL PANELS	
	COOL WHITE	COOL DARK BRONZE	BRONZE	COOL COTTON	CALLALUME	HARDIPLANK SIDING MONTERREY TAUPE	SHERWIN WILLIAMS BALANCED BEIGE	SHERWIN WILLIAMS KAN DYKE	BRONZE	WHITE BY RING MANUFACTURER		CALLALUME
EXTERIOR FINISHES ARE TO MATCH OR BE EQUAL TO VP METAL BUILDING SYSTEM'S FINISH SELECTION UNLESS AUTHORITY HAVING JURISDICTION DOES NOT ALLOW.												
GUTTERS												
DOWN SPOUTS												
FRONT SIDE AND REAR WALL PANELS & TRIM, RECEIVING & EMERGENCY EXIT DOORS (EXTERIOR OF DOORS TO BE PAINTED, REFER TO DOOR SCHEDULE)												
ARCHITECTURAL BLOCK AT BUILDING FACADE TO BE PRE-FINISHED OR PAINTED (2 COATS - LOXON XP MASONRY COATING A24W400 SERIES) TO MATCH THE METAL WALL PANEL.												
FLAT METAL SOFFIT AT STOREFRONT VESTIBULE												
BUILDING FASCIA WALL, PARAPET OVER ENTRANCE, AND CANOPY												
STOREFRONT SYSTEM												
STANDING SEAM METAL ROOF PANELS												
INTERIOR SALES AND RECEIVING FLOOR LINER PANELS												



- ELEVATION KEYED NOTES**
- SIGN FURNISHED AND INSTALLED BY DOLLAR GENERAL CORP. WITH CIRCUIT AS NOTED ON ELECTRICAL PLAN. SIGN TO BE CENTERED ON FRONT OF BUILDING. CONTRACTOR IS TO PROVIDE ADEQUATE BLOCKING AS REQUIRED BY SIGN MANUFACTURER TO SUPPORT SIGN WEIGHT OF UP TO 1,400 LBS. EXTERIOR CANOPY SIGN SHALL BE SUPPORTED BY THE FACE OF CANOPY. CONTRACTOR IS TO PROVIDE ADEQUATE STRUCTURE TO SUPPORT SIGN. COORDINATE THE PROPER SIGNAGE TO BE USED WITH DOLLAR GENERAL.
  - PLYWOOD BLOCKING BEHIND METAL PANELS FOR SIGNAGE. 4'-0"x28'-0" FOR DGP A/B/E/F LAYOUTS. 6'-0"x36'-0" FOR DGP A/B/E/F LAYOUTS. 7'-0"x24'-0" FOR ALL DGMM LAYOUTS.
  - NOT USED.
  - NOT USED.
  - WALL PACK. REFER TO ELEC. DRAWINGS FOR ADDITIONAL INFO. 16'-0" HEIGHT O.C. TO J-BOX.
  - WALL PACK. REFER TO ELEC. DRAWINGS FOR ADDITIONAL INFO. 12'-0" HEIGHT O.C. TO J-BOX.
  - NOT USED.
  - TRIM - SEE FINISH SCHEDULE FOR COLOR.
  - GUTTER AND DOWNSPOUT - SEE FINISH SCHEDULE FOR COLOR.
  - 8" SMOOTH FACE CONCRETE MASONRY UNIT.
  - STANDING SEAM METAL ROOF.
  - PRE-FINISHED METAL WALL PANELS FOR FASCIA AND PARAPET OVER ENTRANCE, REVERSE RIB PROFILE.
  - PRE-FINISHED METAL WALL PANELS FOR SIDE AND REAR. PROVIDE TAMPER-RESISTANT FASTENERS FOR BOTTOM 8'-0".
  - VENT FOR BATHROOM EXHAUST. REFER TO MECHANICAL DRAWING M1 FOR ADDITIONAL INFORMATION.
  - DOOR BUZZER. REFER TO ELECTRICAL DRAWING E1 FOR ADDITIONAL INFORMATION.
  - NOT USED.
  - HVAC UNITS MOUNTED ON ROOF. REFER TO MECHANICAL SHEET M1 FOR MORE INFORMATION.
  - OUTSIDE AIR TEMP. SENSOR MOUNTED OVER RECEIVING DOOR AT 9'-0" A.F.F.
  - MINIMUM EAVE HEIGHT IS 14'-0" A.F.F.
  - PARAPET BEYOND.
  - IN NORTHERN CLIMATES, PROVIDE SNOW GUARDS ON ROOF PER LOCAL CODE.
  - EXTEND PARAPET WALL UP AS NEEDED TO SCREEN ROOF MOUNTED EQUIPMENT IF REQUIRED BY LOCAL ORDINANCE.
  - FINISH GRADE TO BE A MINIMUM OF 6" BELOW FINISHED FLOOR LEVEL AT ALL NONPAVED AREAS.
  - NOT USED.
  - 1/2" DIAMETER x 6" LONG STEEL EYE BOLTS (CLOSED) WITH 1" DIAMETER OPENINGS. DRILL AND EPOXY INTO BLOCK WALL. 4 BOLTS TO BE LOCATED AS SHOWN EACH SIDE OF ENTRY. TOTAL OF 8 BOLTS.
  - GUTTER LEAF GUARDS IF WITHIN 25'-0" OF A TREE.

REVISIONS:

**STORE #30493**  
101 WHITNEY STREET  
STAYTON, OR

**DOLLAR GENERAL**  
PROTOTYPE CRITERIA SET PLAN  
DGP24 AND DGMM24 "B"  
ARCHITECTURAL AND ENGINEERING DEPARTMENT  
BTSPLANS@DOLLARGENERAL.COM

DATE: DECEMBER 4, 2023  
DRAWING TITLE: EXTERIOR ELEVATIONS - DGP  
SCALE: 1/8" = 1'-0"  
SHEET NO.

**A2**